





KNAUF SCHMIEDE

For 30 years, Knauf Schmiede, in the north of Luxembourg, has welcomed every year 4 times the country population.

Knauf Schmiede strategically located where three countries meet



Belgium



Schmiede's KNAUF Shopping Center is the main regional shopping

- 60% of the clients live within a 30 minutes' drive by car
- 48% Stay more than 2 hours in the center
- 71% of the clients are Belgian
- 17% are from Luxembourg
- 11% are German

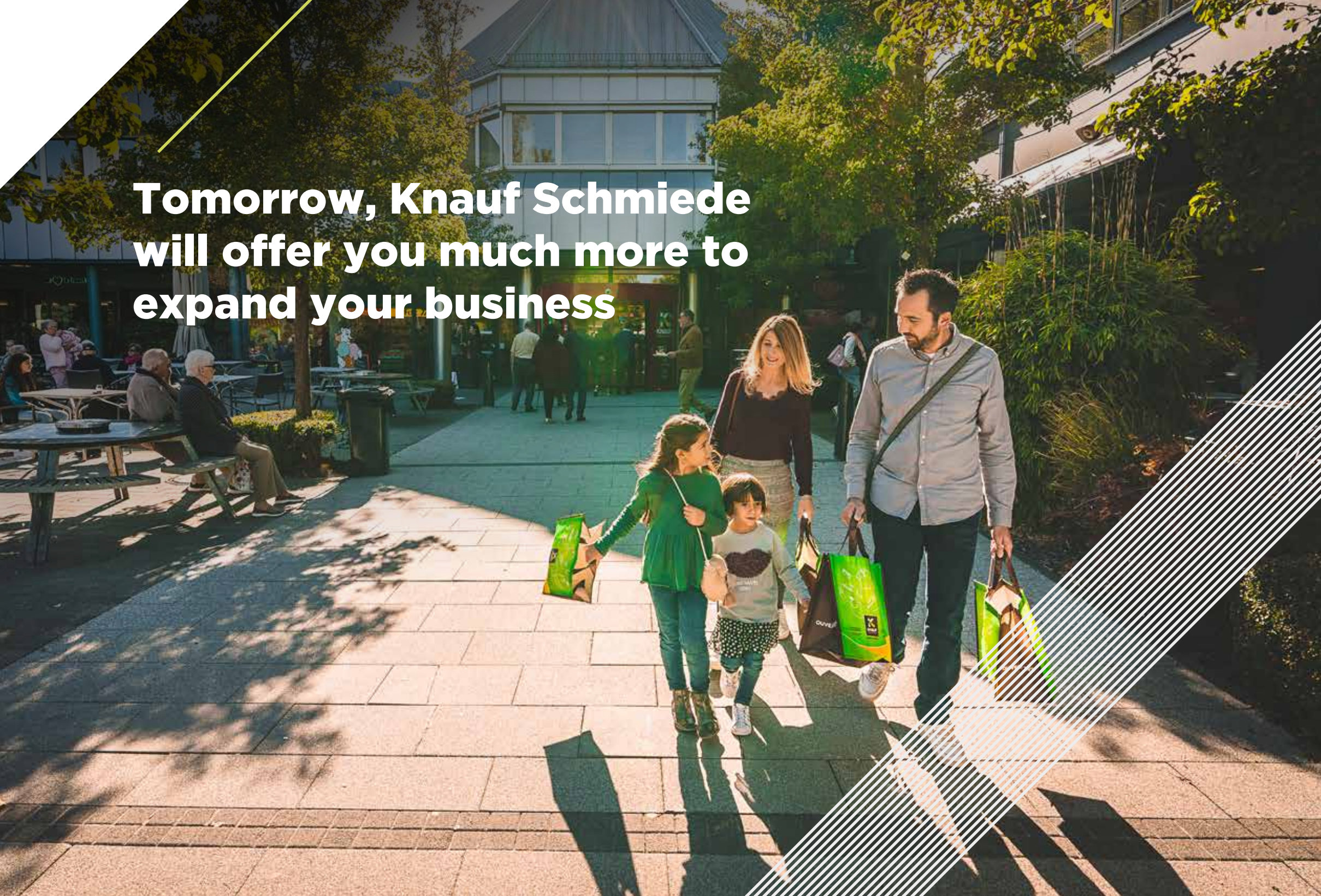
48% stay more than 2 hours in the center

Germany

During the tourist season, many Belgium and Dutch tourists stay nearby the center (there are at least 54 campsites inside a radius of 30 kilometers) and without fail plan to spend a day in Schmiede.

Luxembourg

**Tomorrow, Knauf Schmiede
will offer you much more to
expand your business**



- **3 million visitors/year**
- **75 shops**
- **45,000 m² of sales area**
(included 6,000m² of additional sales area)
- **800 m² of entertainment**
- **1,300 m² of catering**

Our current partners include:



Don't imagine it - let's make it together









K

N

A

U

F

LE RESTO

KNAUF
SHOPPING




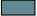




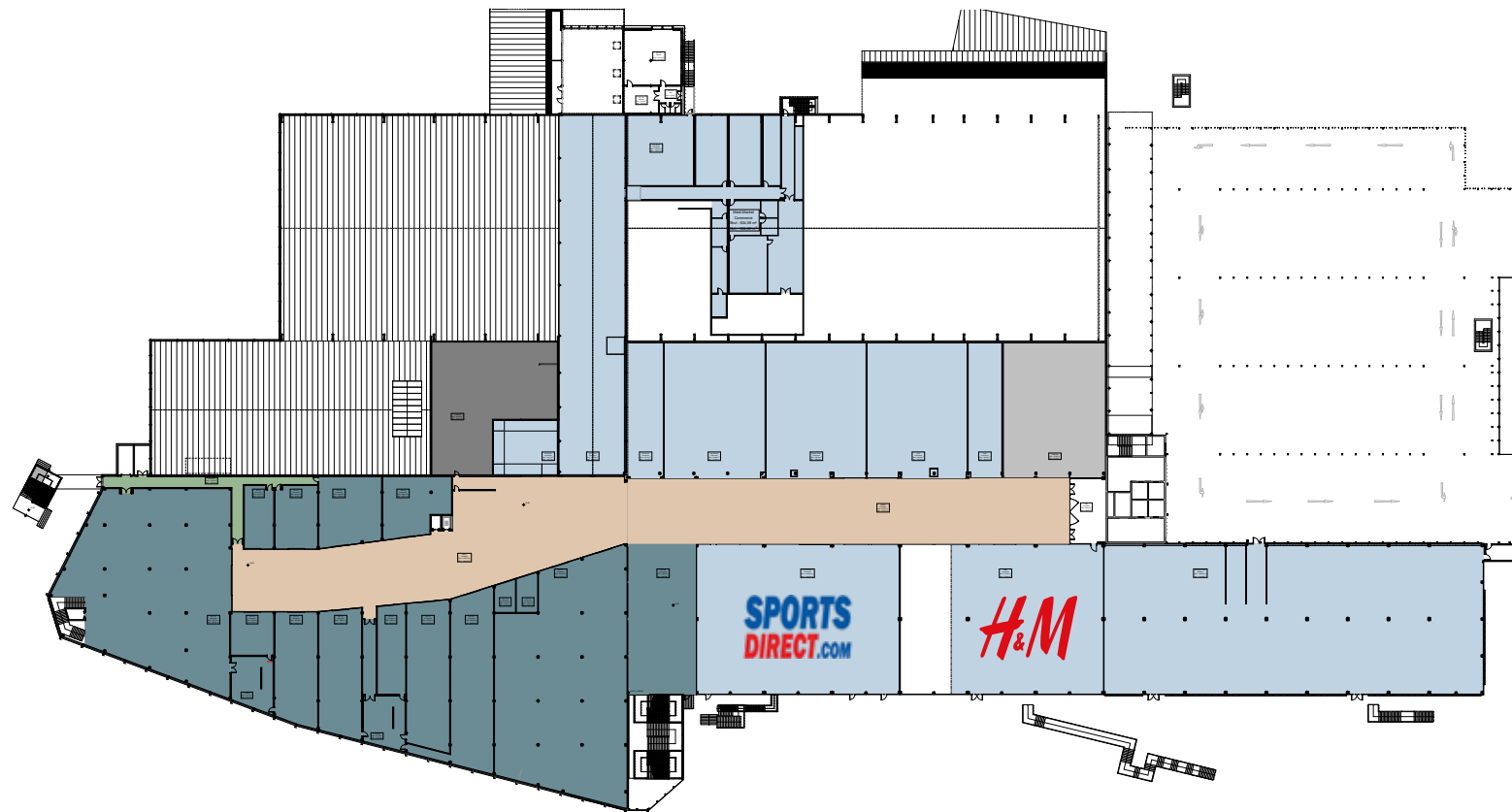
Ground floor



LÉGENDE

-  SURFACE COMMERCIALE EXISTANTE
-  SURFACE COMMERCIALE NOUVELLE

Level 1

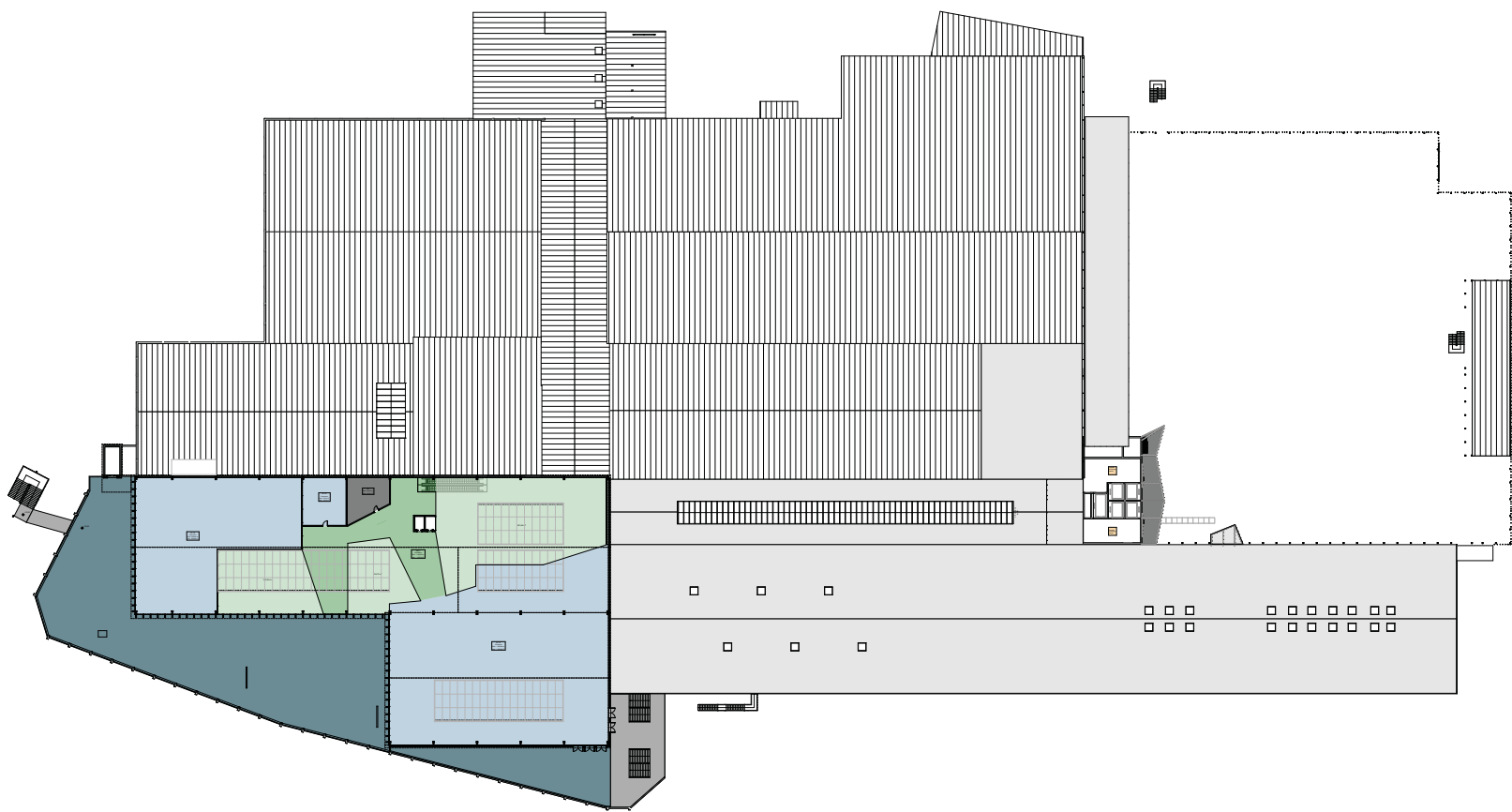


LÉGENDE

-  SURFACE COMMERCIALE EXISTANTE
-  SURFACE COMMERCIALE NOUVELLE

Proposal without commitment dated 10 October 2019 subject to change.

Terrace



LÉGENDE

-  SURFACE COMMERCIALE EXISTANTE
-  SURFACE COMMERCIALE NOUVELLE

For further details see
knauf-schmiede-tomorrow.lu

Owner



Retail agents



INOWAI
PROPERTY PARTNERS